

LONDON STANSTED

RNP Y
NY 04C

RWY 04C

(ACFT CAT A,B,C,D)

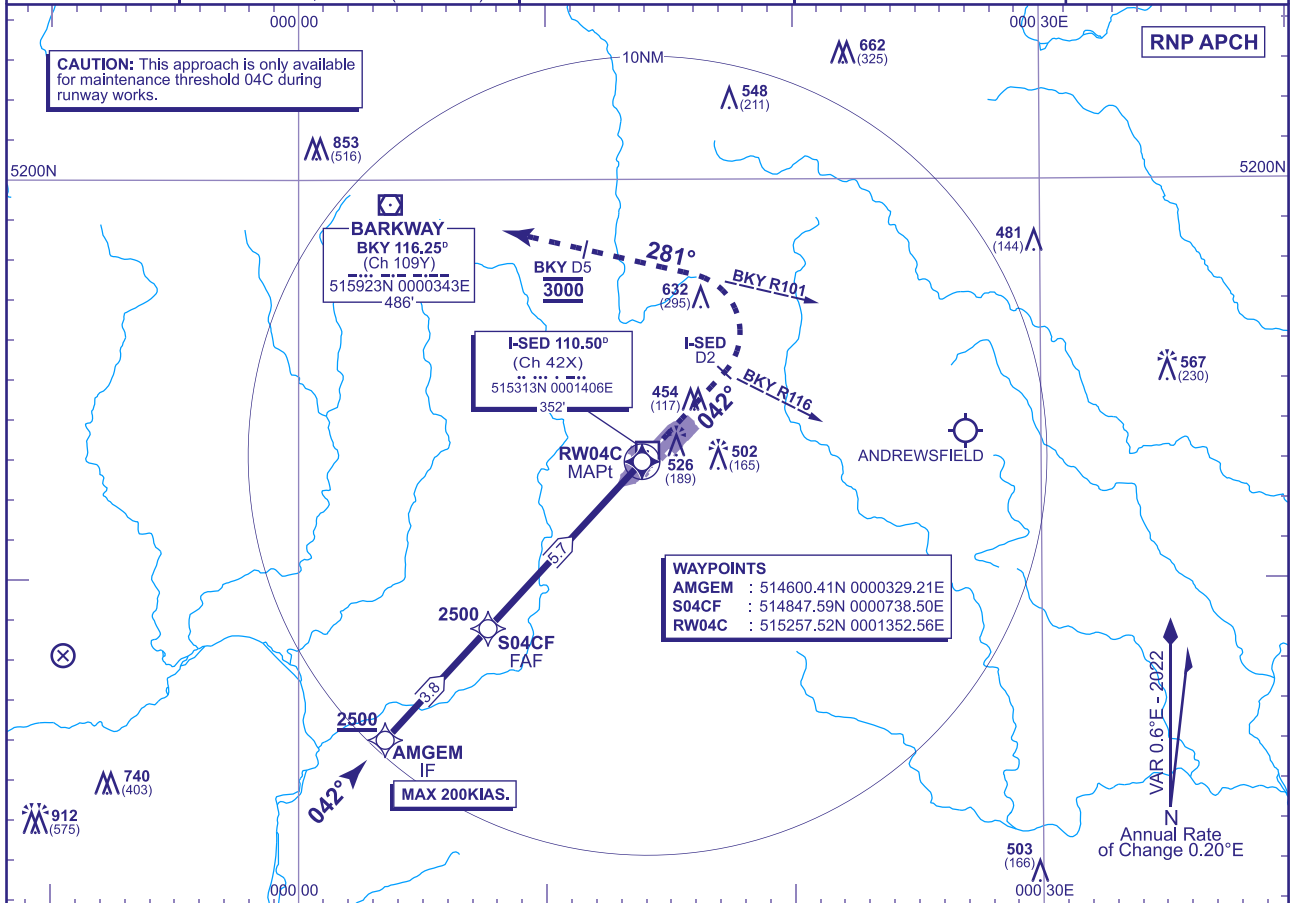


APP	120.625
TWR	123.805, 125.550
	121.730
	121.955
RAD	136.200
ATIS	127.180, 114.550 (CLN VOR)

STANSTED RADAR
STANSTED TOWER
STANSTED GROUND
STANSTED DELIVERY
STANSTED DIRECTOR
STANSTED INFORMATION

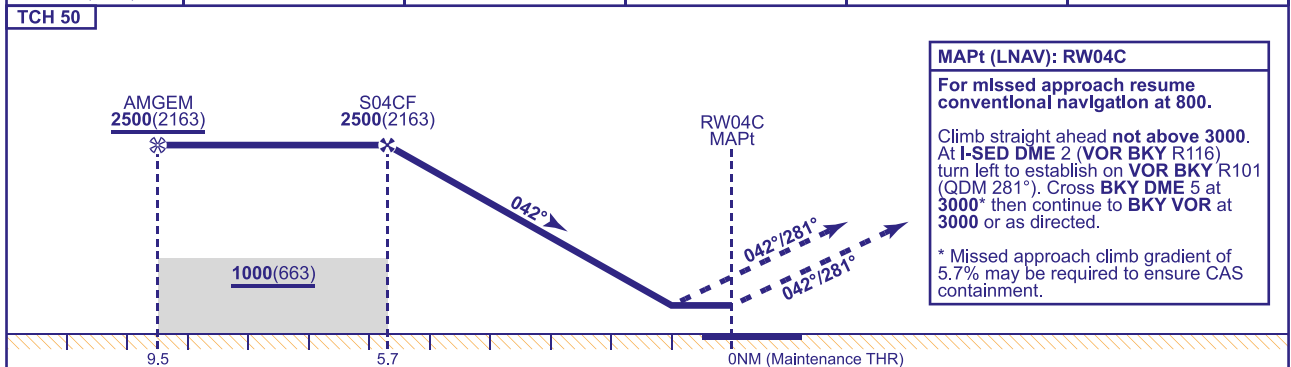
AD ELEVATION	348
THR ELEVATION	337
OBSTACLE ELEVATION	912 AMSL (575) (ABOVE THR)
BEARINGS ARE MAGNETIC	

MIN TEMP -10°C
TRANSITION ALTITUDE 6000



RECOMMENDED PROFILE: VERTICAL PATH ANGLE 3.5° (LNAV 6.1%) 370FT/NM

NM to RW04C	5	4	3	2	1
ALT(HGT)	2250(1913)	1870(1533)	1500(1163)	1130(793)	760(423)



Aircraft Category		A	B	C	D	Rate of descent	G/S KT	160	140	120	100	80
OCA (OCH)	LNAV/VNAV	660(323)	660(323)	660(323)	660(323)		FT/MIN	990	870	740	620	500
	LNAV	710(373)	710(373)	710(373)	710(373)							
VM(C)OCA (OCH AAL)	Total Area	900(552)	900(552)	1030(682)	1040(692)							

AIRCRAFT UNABLE TO RECEIVE VOR DME BKY
Advise ATC. Radar direction will be passed for missed approach procedure.

NOTE	1	MAX 185KIAS for MAP until established on BKY R101.
	2	DME I-SED only to be used for missed approach.
	3	Temperature at which VPA exceeds 3.5° is 14°C.

CHANGE (1/24): STANSTED AD FOOTPRINT UPDATED.